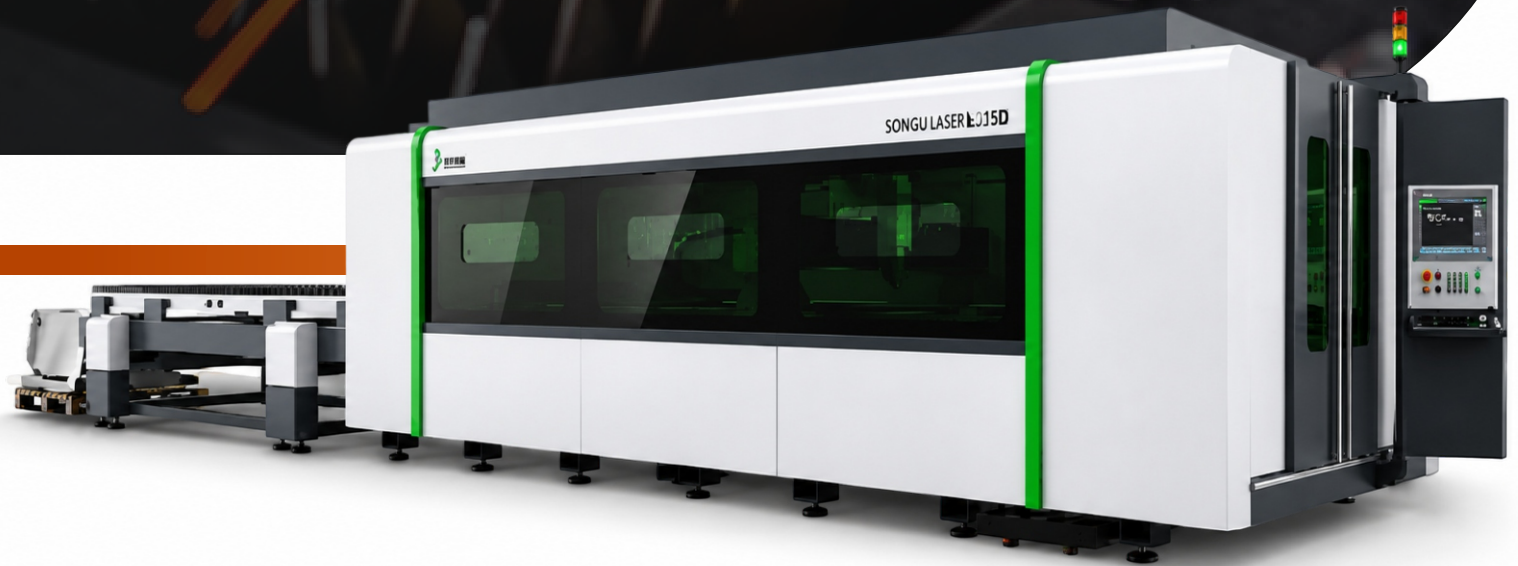




SAHYADRITM
INDUSTRIES

***PRECISION IN EVERY
CUT, STRENGTH IN
EVERY BEND***



Delivering high-quality sheet metal solutions with accuracy, reliability, and speed.



ABOUT US

Sahyadri Industries is a trusted name in precision sheet metal manufacturing, offering advanced Laser Cutting, CNC Bending, and Fabrication services. With state-of-the-art machinery and a highly skilled team, we deliver components with exceptional accuracy, strength, and consistency. Our expertise covers a wide range of industrial applications, from intricate custom parts to large-scale fabrication projects. Backed by strict quality control standards and efficient production processes, we ensure reliable performance and timely delivery.

We are committed to engineering excellence, operational efficiency, and customer satisfaction. Through innovation and precision-driven manufacturing, Sahyadri Industries provides dependable solutions that meet modern industrial demands.

We also provide design services using CAD, CAM, and Metallic software.

- ✓ Certified company
- ✓ Our experience



OUR VISION

To Be The Global Benchmark In Sheet Metal Engineering By Combining Advanced Technology With Craftsmanship To Deliver Uncompromising Reliability And Precision.



OUR MISSION

To Provide World-class Sheet Metal Solutions Through Technical Precision, Delivering High-quality, End-to-end Manufacturing With Strict Logistical Discipline.

WHY CHOOSE US

At Sahyadri Industries, we specialize in precision sheet metal fabrication powered by advanced CNC technology and metallurgical expertise. With capabilities in fiber laser cutting, CNC bending, and high-quality fabrication, we deliver durable and accurate solutions in stainless steel, carbon steel, and aluminum for automotive, aerospace, and industrial applications.

- ✓ Advanced Laser Cutting
- ✓ Strict Quality Assurance
- ✓ High Precision Bending
- ✓ Cost-Effective
- ✓ Timely Project Execution
- ✓ Customized Industrial Solutions





LASER CUTTING



We use advanced Proteck Machinery ProLaser Blaze CNC Laser Cutting systems designed for high precision, high speed, and superior cutting quality across multiple materials & industrial applications. Our laser cutting solutions ensure clean edges, accurate dimensions, minimal material wastage, and excellent repeatability, making them ideal for complex fabrication requirements and customized sheet metal components.

Equipped with modern CNC technology and operated by skilled professionals, our laser cutting facility is capable of handling a wide range of materials including mild steel, stainless steel, aluminum, and other industrial metals with exceptional accuracy and efficiency. The advanced automation and precision control of our systems enable faster production cycles, consistent quality, and intricate design execution for industries such as engineering, electrical, automotive, infrastructure, telecom, and industrial manufacturing. From prototype development to bulk production, we deliver reliable laser-cutting solutions that meet stringent industrial standards and customer specifications.

- ✔ **High Precision & Accuracy**
- ✔ **No Material Contamination**
- ✔ **Complex 2D Cutting Capability**
- ✔ **High-Speed Processing**
- ✔ **Wide Material Compatibility**



LASER CUTTING

Benefits

- ✔ High Precision & Accuracy
- ✔ Smooth & Burr-Free Finishing
- ✔ Faster Production Turnaround
- ✔ Minimal Material Wastage
- ✔ Capability for Complex Designs
- ✔ Consistent Quality in Bulk Production
- ✔ Cost-Effective Manufacturing
- ✔ Suitable for Multiple Metal Materials
- ✔ Reduced Manual Errors
- ✔ High-Speed Industrial Performance

Material Thickness Capacity

SR.NO	Material	Thickness
1	Mild Steel	30 mm
2	Stainless Steel	30 mm
3	Aluminum	30 mm
4	Brass	15 mm
5	Copper	12 mm





CNC BENDING



Benefits

- ✔ Software Controlled Precision
- ✔ Servo Motor Accuracy
- ✔ Enhanced Safety Sensors
- ✔ Automatic Spring-back Compensation
- ✔ Short Lead Times

Our CNC Bending solutions using Proteck Machinery ProBend Merit Series deliver precise bending angles with automatic spring-back compensation and servo-controlled accuracy for superior fabrication quality. Designed for complex sheet metal operations, our advanced CNC systems ensure high consistency, dimensional accuracy, smooth finishing & reliable performance across various industrial applications.

With advanced automation and skilled operators, we manufacture intricate bends, custom profiles, and heavy-duty fabricated components with exceptional precision repeatability. Our facility supports materials such as mild steel, stainless steel, aluminum & galvanized sheets, helping reduce production time, minimize errors, and maintain consistent quality for both customized and high-volume manufacturing requirements.

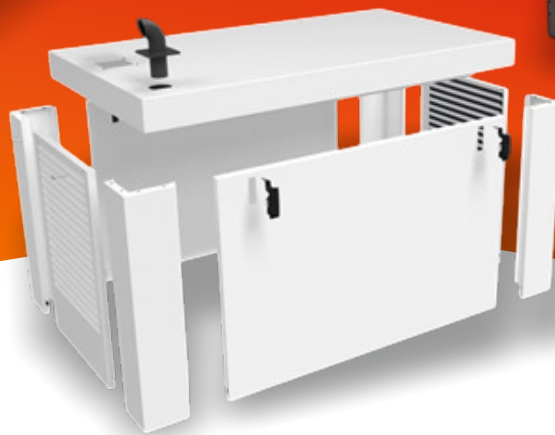
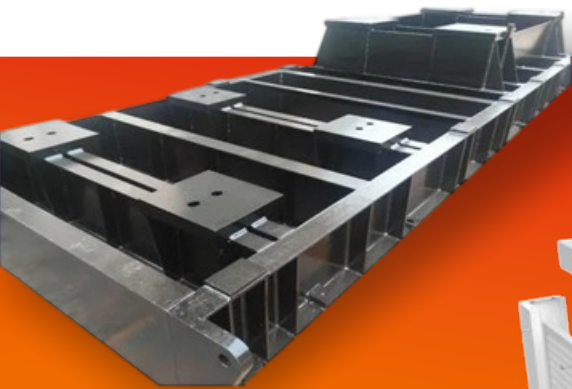


END-TO-END INDUSTRIAL SOLUTIONS

We design and manufacture high-quality industrial enclosures, electrical cabinets, machine base frames, battery enclosures, industrial containers, and customized sheet metal components tailored to specific customer requirements.

Our solutions are engineered with precision, durability, and functionality to meet the demanding needs of various industries including power, automation, infrastructure, engineering, telecom & manufacturing. With advanced fabrication facilities and a highly skilled team, we deliver complete end-to-end industrial solutions – from design and prototyping to fabrication, finishing, and final assembly.

We specialize in CNC sheet metal fabrication, laser cutting, bending, welding, powder coating & customized metal manufacturing that ensure superior quality, structural strength, and long term reliability. Our commitment to innovation, timely delivery, and customer satisfaction enables us to provide cost-effective and performance-driven solutions for projects of every scale.



Benefits

- ✔ Suitable for Multiple Industries
- ✔ End-to-End Manufacturing Support
- ✔ Faster Production & Timely Delivery
- ✔ Cost-Effective Manufacturing Solutions
- ✔ Advanced CNC Sheet Metal Processing
- ✔ Customized Industrial Solutions
- ✔ Superior Finishing & Quality Standards
- ✔ Precision Engineering & Fabrication
- ✔ High Structural Strength & Durability



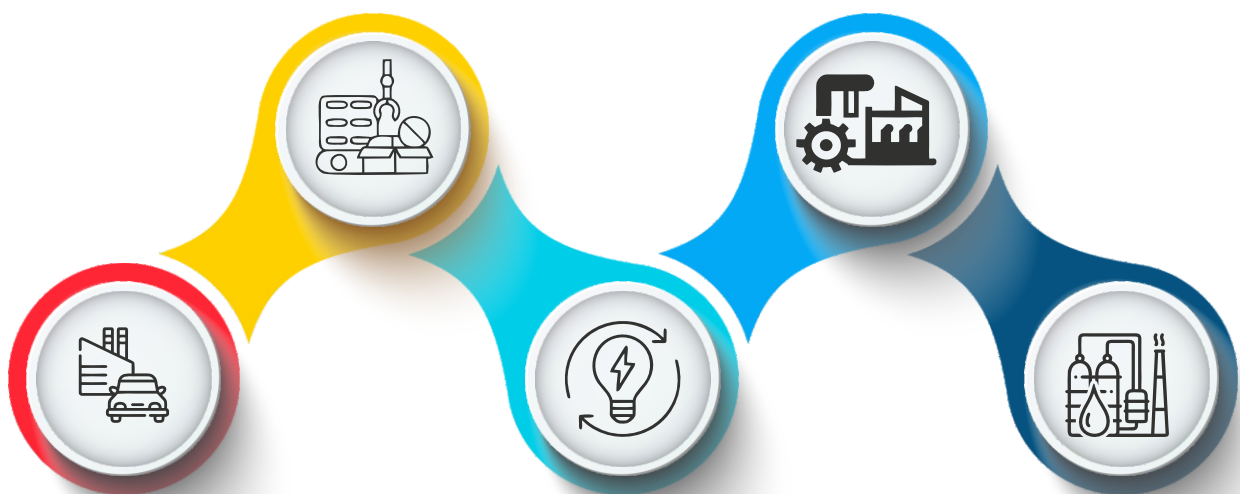
AREA SERVED

We specialize in designing and manufacturing high-quality industrial enclosures, electrical cabinets, machine base frames, battery enclosures, industrial containers, and customized sheet metal components tailored to customer requirements. With a strong focus on precision engineering, durability, and superior fabrication standards, we deliver reliable solutions for a wide range of industrial applications. Our advanced manufacturing capabilities, skilled workforce, and commitment to quality ensure products that offer excellent performance, structural strength, and long-lasting reliability for industries such as power, automation, infrastructure, engineering, and manufacturing. Backed by modern fabrication technology and a customer-centric approach, we provide complete end-to-end manufacturing solutions – from concept design and prototyping to precision fabrication, surface finishing, and final assembly.

Our expertise in CNC laser cutting, CNC bending, welding, powder coating, and customized metal fabrication enables us to manufacture complex components with exceptional accuracy consistency. We are committed to delivering cost-effective, high-performance solutions with timely execution, strict quality control, and dependable service standards that help our clients achieve operational efficiency and long-term industrial reliability.

**Pharmaceuticals
Equipment.**

**Industrial Machinery &
Engineering - Oil, Gas, Steel &
Transmission.**



Automobile

**Energy
Portable Energy Solutions.**

Petrochemicals

OUR CLIENTS

karloskar
Pneumatic

TATA
TATA AUTOCOMP

THERMAX

BG BGAUSS

Sua Automation
a fountain of Innovation & Technology

ARYAN
we serve... to conserve

innovative
Systems & Robotics India Pvt Ltd

CREATIVE TOOLS & COMPONENTS
Creative Tools & Components (India) Pvt. Ltd.

FINEPAC
FINEPAC® STRUCTURES PVT. LTD.



Get In Touch



NIKHIL JADHAV



+91 95611 50151



sahyadriindustries21@gmail.com
nikhiljadhav@sahyadriind.com



www.sahyadriind.com



Plot No.208, Sector 10, PCNTDA, MIDC, Bhosari, Pimpri-Chinchwad,
Maharashtra 411026.



GSTIN - 27BBYPJ5045G1Z8



Scan to visit website